

the artigo collection



MONDO CONTRACT.FLOORING.

"Throughout our company's six decades, MONDO has engineered flooring that meets the industry's most stringent quality standards and that help our customers build safe, eco-friendly environments."

Federico Stroppiana
CEO, MONDO Group



the mondo group

Engineering high quality surfaces to meet the highest quality standards in the industry.

The MONDO Group was founded in 1948, in Gallo D'Alba, by Edmondo Stroppiana and his sons Elio and Ferruccio, and took its name from the founder's nickname, "MONDO." The company's first product was the ball used for handball, a popular sport in the Piedmont region (northwest Italy), where the company was started. Initially, the balls were made in the basement oven of their home, but soon the young entrepreneurs embraced more modern, and more effective, production means.

By 1950, MONDO had already become a full-fledged industry, complementing its range of balls with its first floorings for commercial and sport applications. The founder's commitment to excellence was only superseded by their determination to succeed. Their passion and leadership inspired generations of employees to help build a company that has evolved into a diverse and adaptive multi-national entity.

MONDO's global success has been built upon our investment in research and development, design, engineering and production, not only in our final products, but the raw materials, equipment and processes that are necessary to meet the changing needs and expectations of our customers. This has enabled the company to guarantee its mission and mantra, for over 60 years, to manufacture products that are of the highest quality standards in the industry.

Today, MONDO has 13 production plants and sales subsidiaries selling in 193 countries, all of which we are proud to say are a part of the MONDO family.



the artigo collection

The Artigo Collection

Artigo's collection origins date back to the early 1920's research and development initiatives made by the Pirelli Group.

These initiatives have ultimately culminated into decades of innovative and unparalleled design concepts for Europe, North America, the Far East and the rest of the World.

In 1992, the MONDO Group acquired Artigo SpA which was founded in 1962 by Pirelli. Artigo has flourished as its own manufacturing entity predicated upon creativity, functionality and haute design predominantly in Europe, the Far East and the rest of the World. "The Artigo Collection" now synergizes the MONDO North American, and Artigo lines into one newly invigorated product spectrum.

Most recently, in collaboration with Sottsass Associates, MONDO has tapped into the boundless creative freedom that rubber flooring provides. This collaboration has resulted in the development of new rubber flooring products that combine innovation, technology, and maximum functional performance while offering unprecedented material combinations. New surfaces are the result of cutting edge production processes, the new surfaces mirror design-oriented approaches inspired by the characteristics and beauty of natural elements. The aesthetics offers an exceptionally broad spectrum of applications.



Research of Well-Being

Research & Development has been the cornerstone of MONDO since our inception.

The heart of MONDO's operations and the driving force behind the company's international success in a wide variety of applications is the MONDO Research Center, which works in collaboration with prestigious research institutes (Harvard University, University of Pavia, Human Performance Laboratory, and University of Calgary) specializing in various fields, such as biomechanics, sports medicine and innovative materials, has perfected avant-garde solutions which have been awarded several major patents (to date, MONDO has received 211 patents, as well as 156 trademarks). Each year, a percentage of the MONDO Group's revenues are reinvested in projects associated with the MONDO Research Center.

MONDO is also unique in its production methodology as it designs and builds the equipment upon which our products are manufactured. Proprietary manufacturing technology has been instrumental in MONDO's ability to retain its competitive and innovative advantage within the contract rubber flooring industry for nearly six decades.

The Stroppiana family's environmental consciousness started decades in advance of the industry recognition of current day. MONDO was one of the first companies to implement sustainable practices and post-industrial content recovery to limit our environmental impact, well before environment stewardship became an industry standard.

Our commitment to the environment remains a corporate priority and a core research and development metric. For MONDO, this is Research of Well-Being. We use our proprietary technology and extensive research and development resources to create products that are safe, healthy, and beautiful and provide rewarding environments for which to work, play and relax.



the dynamics of rubber
flooring

Rubber is a raw material that has unique stress-resistance and elastic characteristics, making it suitable for a wide range of high-performance flooring applications. MONDO's extensive research and development has allowed us to capture and retain harmonious synergies between surface, body and environment. We adjust design, performance, comfort and safety benchmarks of our surfaces in order to create spaces that enhance our well-being. MONDO is a name synonymous with quality and exceptional performance characteristics.



design



The development of the new rubber flooring products within the Artigo collection was achieved with the collaboration of Sottsass Associates' mastery of color and design. The new flooring collection combines innovation, technology, and maximum functional performance while offering unprecedented material combinations. At the base of Kayar product design is the incorporation of visual characteristics that are inspired by the beauty of nature. This design perspective is evident in the Kayar surface where natural fibers are incorporated into the flooring.

1

BEHAN
p. 18.16

ABINE

w e l l - b e i n g



Rubber is obtained from two sources; harmlessly extracted from nature via the Hevea trees, or from synthetic materials. MONDO's rubber flooring does not contain toxic substances such as PVC, heavy metals, halogens, asbestos, formaldehyde, cadmium or volatile plasticizers. VOC's are not a concern with MONDO rubber flooring is certified in accordance with strict German and American regulations including BRE, BLUE ANGEL, GREENGUARD GOLD. MONDO rubber flooring can be recycled after its long useful life.



high performance



High performance is coupled with extraordinary durability characteristics in all MONDO contract surfaces. Classically, rubber has been used throughout the past century in the most arduous of applications. Due to our manufacturing process, MONDO contract flooring is naturally antibacterial and antimicrobial throughout. It is stain and chemical resistant, making the Artigo Collection an excellent choice for healthcare and laboratory environments. The unique specifications of our flooring make it the ideal choice for high-traffic areas, or those areas that endure high static or dynamic loading.



comfort



MONDO rubber flooring has tremendous anti-fatigue characteristics compared to other commonly used resilient flooring surfaces. This results in increased comfort for personnel who are standing for long periods of time, such as educators and healthcare providers. MONDO's surfaces provide outstanding acoustical value and noise reduction qualities. It is inherently anti-static thus helping to prevent the formation of potential discharges that can occur.



s a f e t y



In commercial interiors where safety and hygiene are crucial requirements, MONDO rubber flooring has proven to be an ideal choice. We have designed our surfaces with a high coefficient of friction to reduce the risk of injuries associated with slips and falls, well above ADA requirements. Additionally, our surfaces are manufactured in a process that produces a dense surface that has high dimensional stability. Welding the seams of our material is optional as our surfacing will not shrink over time. However, when desired, MONDO's contract surfaces can be welded during the installation process.



exclusive technology - mondo
shield



MONDO has an exclusive surface treatment for our smooth surface materials which is UV cured during the production process. The MONDO Shield surface treatment is designed to provide its users with considerable reduction in the level of detergents, water and energy required for maintenance. This means greater savings for users and lower total cost of ownership during the product's lifecycle.









Sutter North Bay Regional Surgery Center, California, USA
Architect of Record / Design Architect:
Boulder Associates









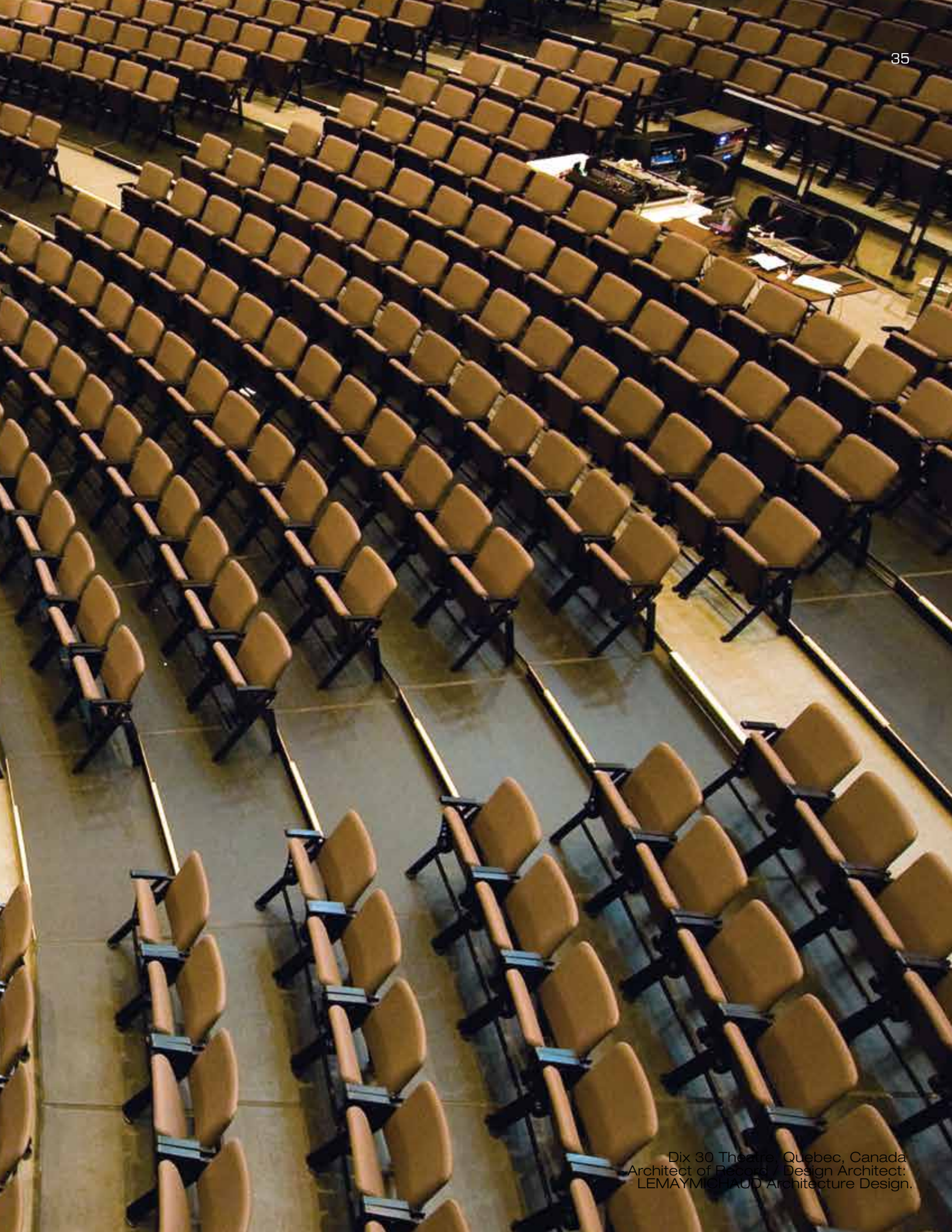










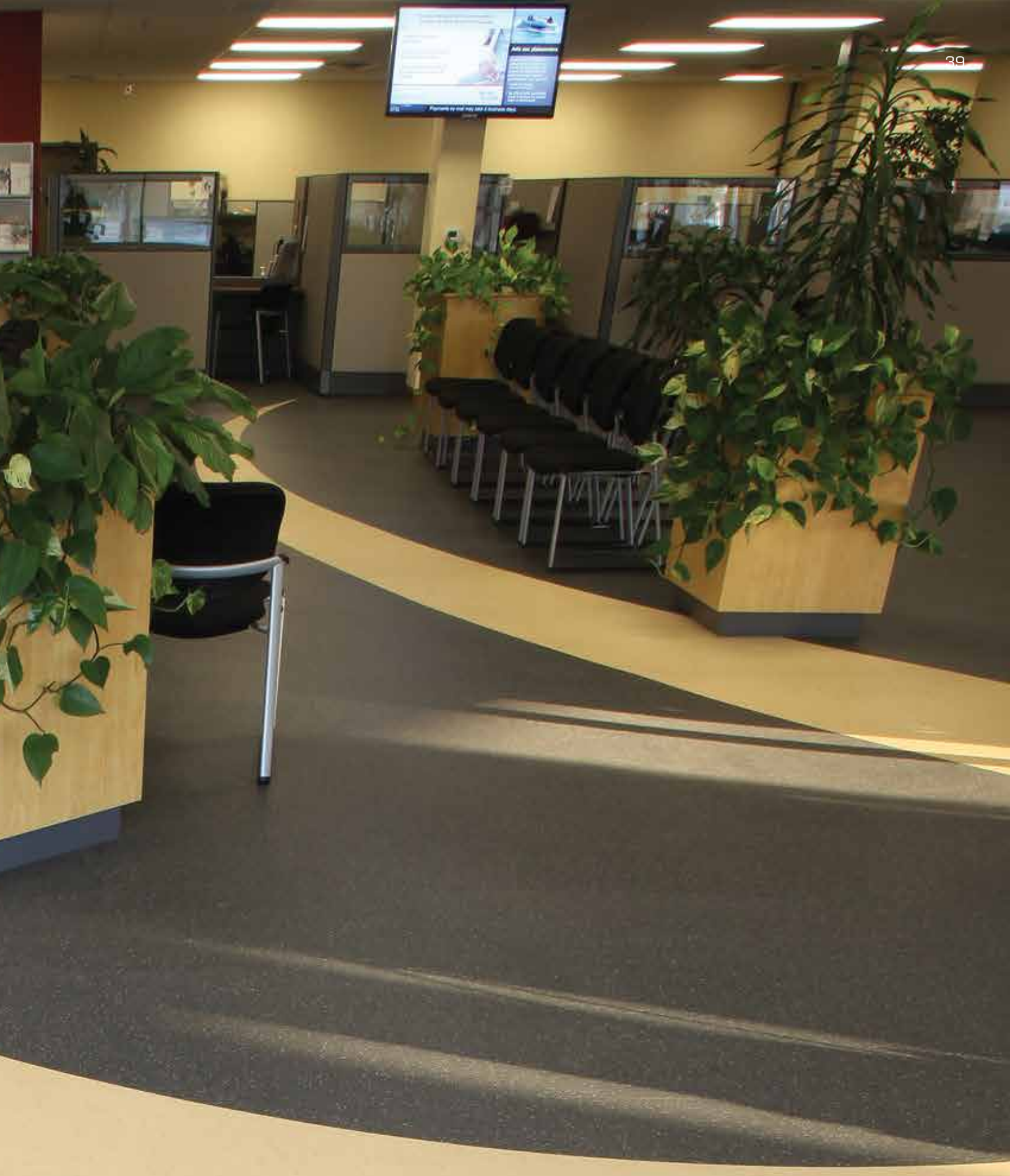






Virginia Piper Sports & Fitness Center, Arizona, USA
Architect of Record / Design Architect:
Baldinger Architectural Studio

















HARMONI

Smooth surface with multicolored granules.



1/8 in. (3mm)



24 in. x 24 in.
(61cm x 61cm)



6.2 ft. x 32.9 ft.
(1.9m x 10m)



0.98 lb./ft.²
(4.8 kg/m²)



HG 100 Vanilla



HG 123 Sand



HG 101 Cotton



HG 105 Citrus



HG 106 Sage



HG 115 Seaweed



HG 031 Glacier



HG 116 Iceberg



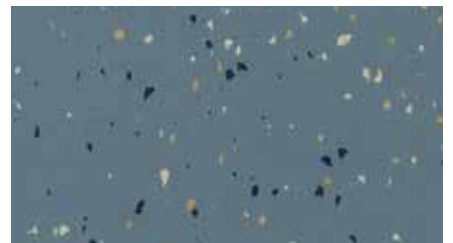
HG 032 Midnight Sky



HG 120 Pearl Grey



HG 104 Classic Charcoal



HG 117 Blue Grey



HG 111 Butterscotch



HG 109 Velvet



GREENGUARD

PRODUCT CERTIFIED FOR
LOW CHEMICAL EMISSIONS
UL.COM/GG
UL 2818

GOLD



HG 037 Almond



HG 102 Stone



HG 039 Mocha



HG 114 Dill



HG 038 Grasshopper



HG 118 Deep Sea



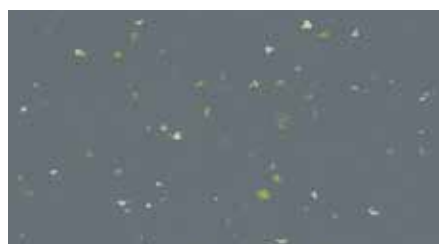
HG 113 Sinatra



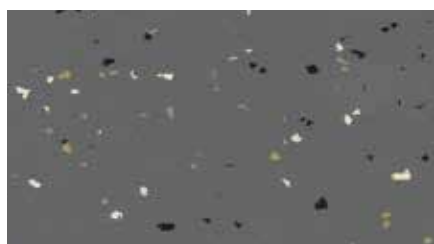
HG 112 Aquamarine



HG 107 Legacy Blue



HG 121 Shark Skin



HG 119 Dark Grey



HG 110 Jazz



HG 108 Constellation





HG 122 Ebony

NATURA

Smooth marbled surface design.

 1/8 in. (3mm)

 24 in. x 24 in.
(61 cm x 61 cm)

 6.2 ft. x 32.9 ft.
(1.9 m x 10 m)

 0.98 lb./ft.²
(4.8 kg/m²)



NA 07 Ecrú



NA 01 Cream



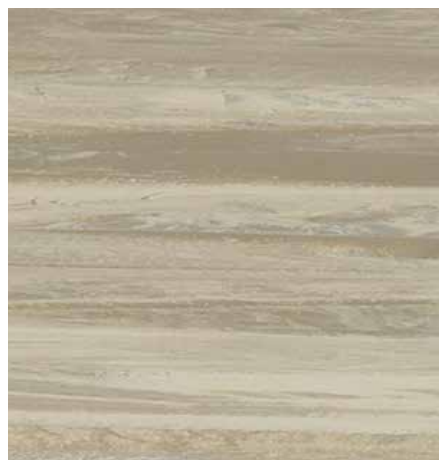
NA 02 Hay



NA 03 Summer



NA 23 Glen Maple



NA 08 Desert



NA 05 Greige



NA 20 Nimbus



GREENGUARD

PRODUCT CERTIFIED FOR
LOW CHEMICAL EMISSIONS
UL.COM/GG
UL 2818

GOLD



NA 21 Metal



NA 09 Cliff



NA 04 Sand



NA 16 Autumn



NA 14 Hickory



NA 06 Walnut



NA 12 Charcoal

KAYAR

Smooth surface with natural coconut husk fibers.



1/8 in. (3mm)



24 in. x 24 in.
(61cm x 61cm)



6.2 ft. x 32.9 ft.
(1.9m x 10m)



0.98 lb./ft.²
(4.8 kg/m²)



K 073



K 104



K 049



K 052



K 027



K 103



K 038



K 054



K 072



K 058



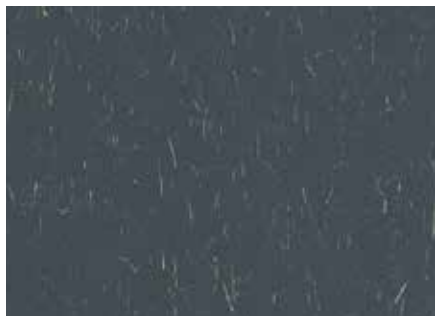
K 048



K 071



K 017



K 021



K 064



K 039



K 062



K 061



K 070



K 063



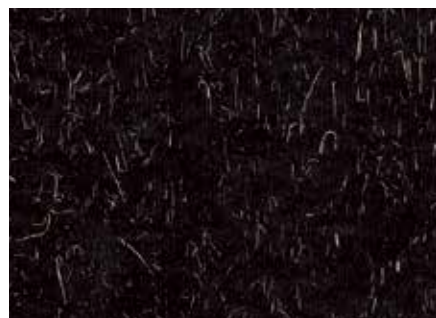
K 102



K 074



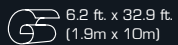
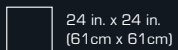
K 001



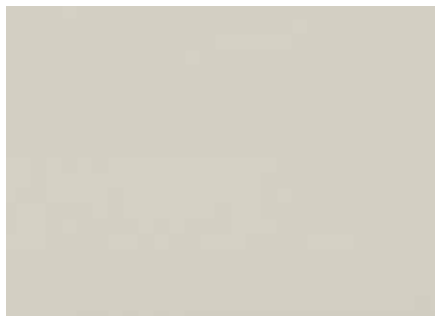
K 000

UNI

Smooth surface in solid colors.



U087 Cream



U099 Ice



U036 Silk



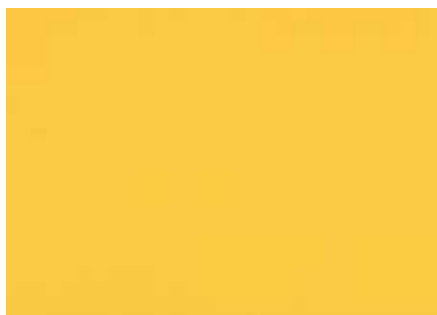
U026 Steel



U020 Smoke



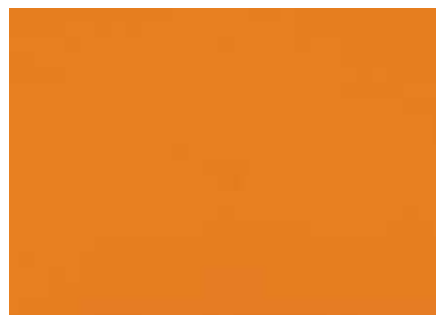
U109 Pearl



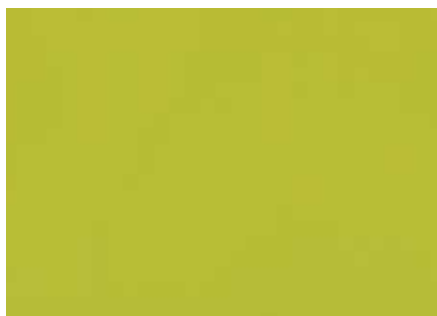
U108 Canary



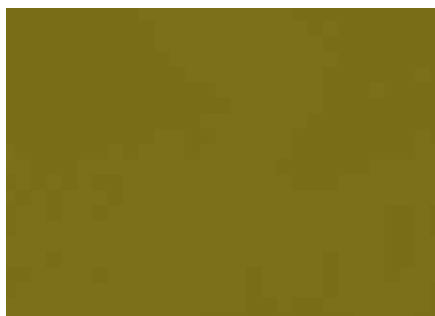
U011 Gold



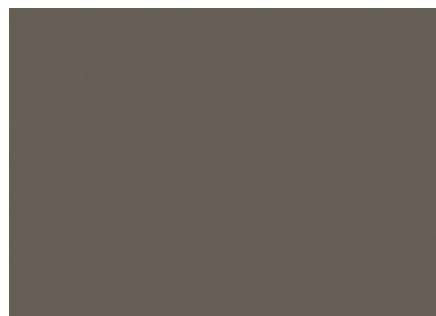
U105 Tangerine



U107 Lime



U106 Bamboo



U039 Olive



U027 Sand



U054 Greige



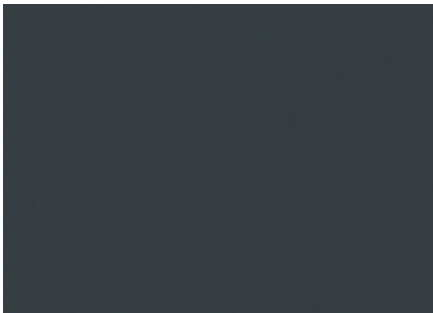
U055 Stone



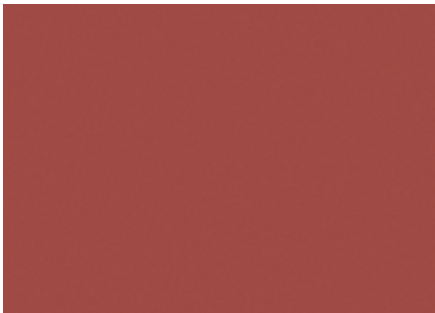
U017 Metal



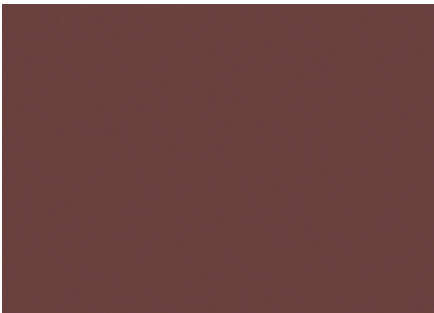
U016 Avio



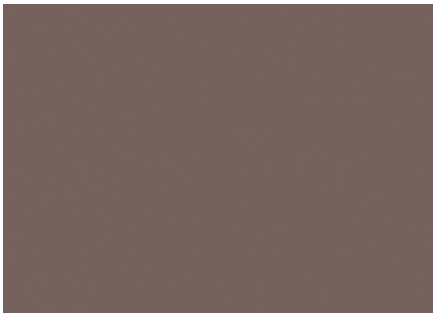
U021 Eiffel



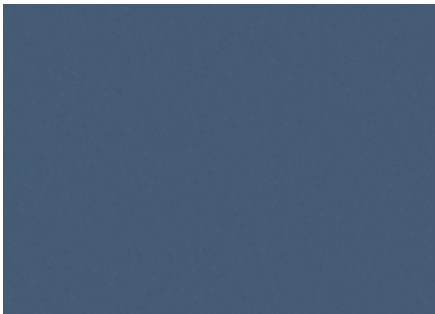
U013 Firebrick



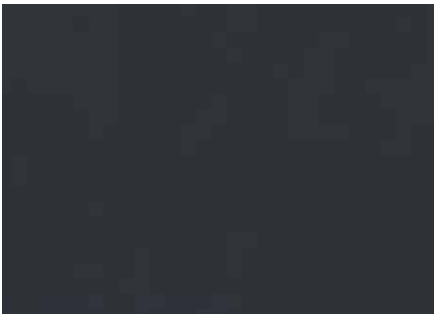
U014 Mahogany



U056 Navajo



U018 Grape



U110 Slate




U000 Carbon

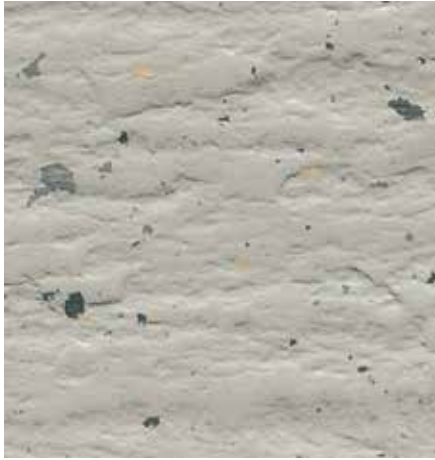
TERRANOVA

Slate surface with multicolored granules.

 1/8 in. (3mm)

 39 3/8 in. x 39 3/8 in.
(100cm x 100cm)

 0.92 lb./ft.²
(4.5 kg/m²)



439 Light Grey



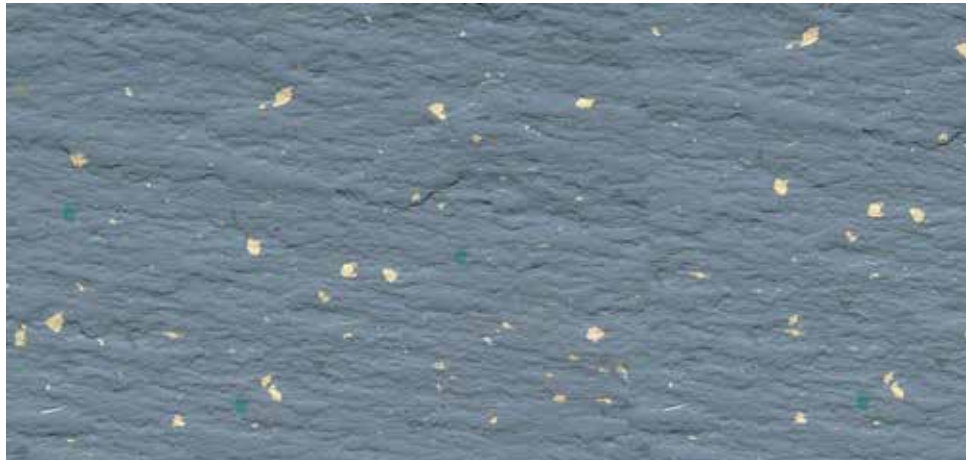
449 Risotto



455 Buff



415 Light Blue



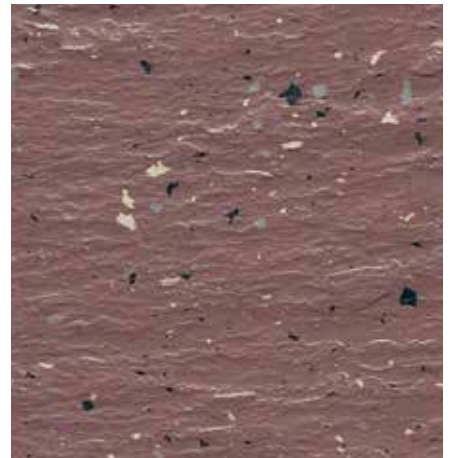
413 Deep Blue



411 Blue Sky



406 Stone Grey



436 Lilac



GREENGUARD

PRODUCT CERTIFIED FOR
LOW CHEMICAL EMISSIONS
UL.COM/GG
UL 2818

GOLD



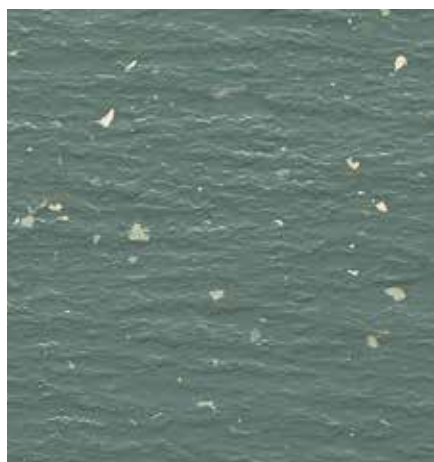
448 Peacock



434 Taupe



437 Northern Green



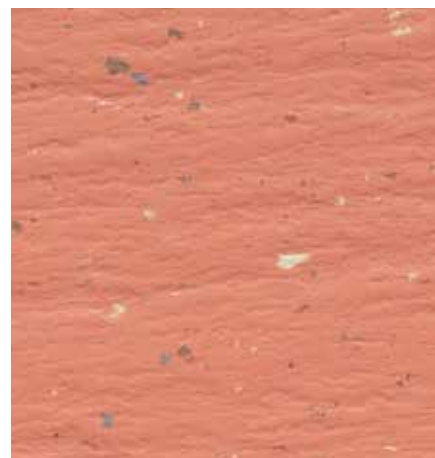
442 Colonial Green



458 Dark Green



425 Burgundy





418 Clay

GRANITO

Smooth surface with multicolored granules.

 0.08 in. (2mm)

 24 in. x 24 in.
(61cm x 61cm)

 6.2 ft. x 45.11ft.
(1.9m x 14m)

 0.68 lb./ft.²
(3.3 kg/m²)



G 363



G 315



G 370



G 365



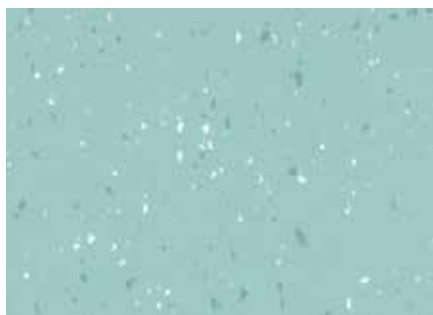
G 473



G 371



G 472



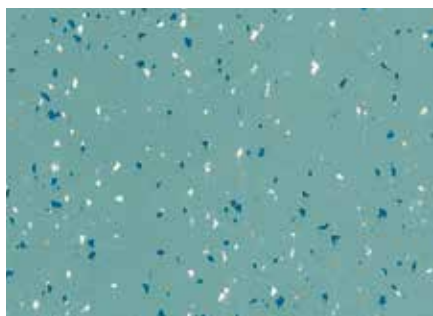
G 378



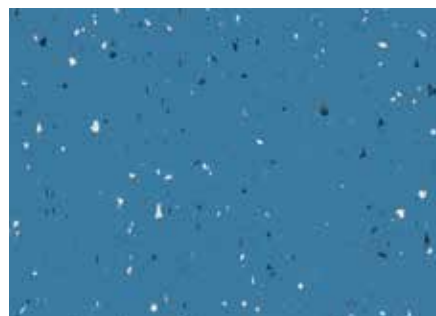
G 372



G 367



G 336



G 342



GREENGUARD

PRODUCT CERTIFIED FOR
LOW CHEMICAL EMISSIONS
UL.COM/GG
UL 2818

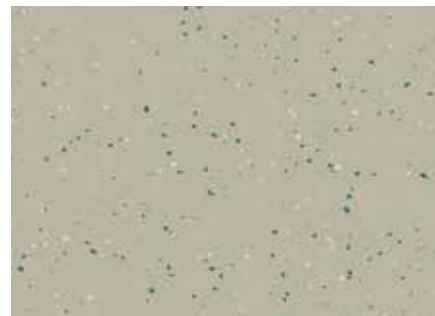
GOLD



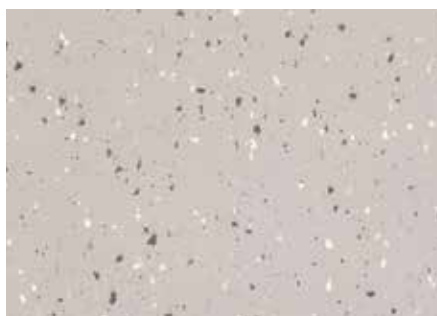
G 479



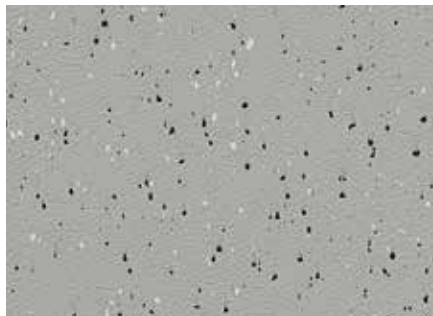
G 431



G 480



G 368



G 305



G 478



G 475



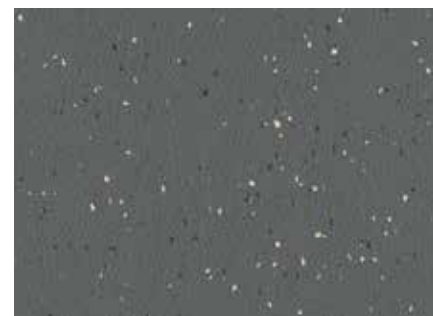
G 306



G 477



G 474



G 308



G 476

ZEUS

Hammered surface with multicolored granules.



0.138 in. (3.5mm)



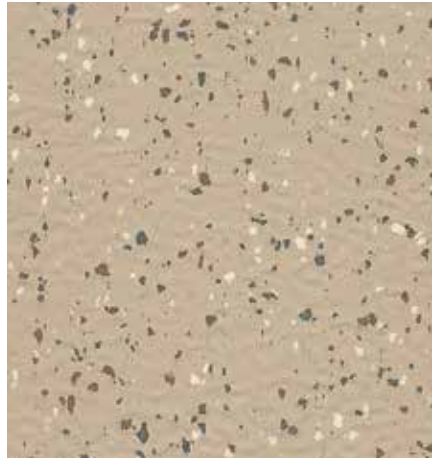
39 3/8 in. x 39 3/8 in.
(100cm x 100cm)



1.15 lb./ft.²
(5.6 kg/m²)



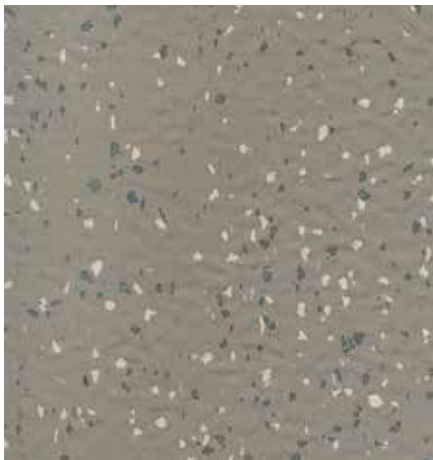
Z 630



Z 628



Z 629



Z 636



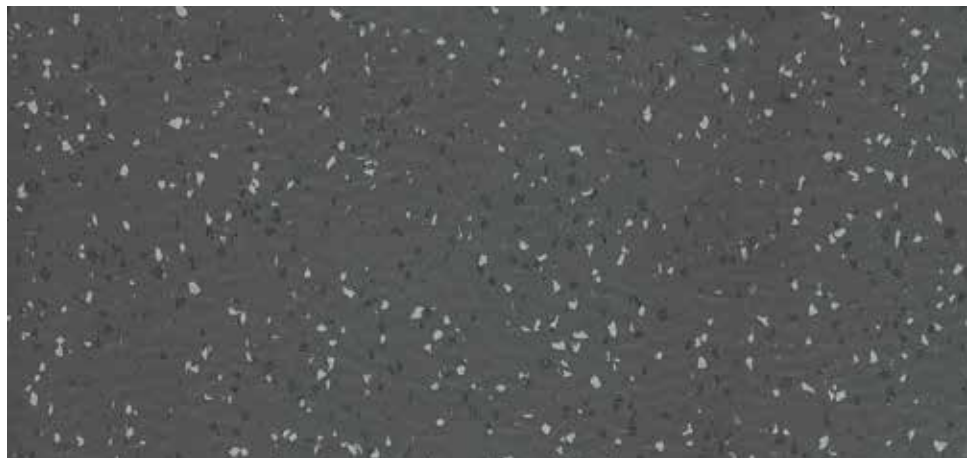
Z 642



Z 626



Z 639



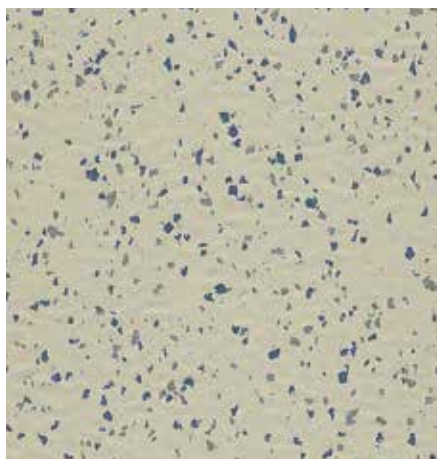
Z 638



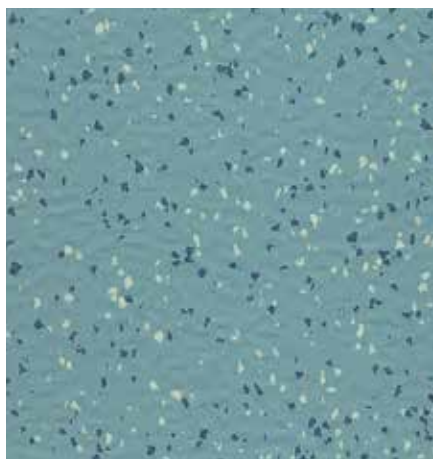
GREENGUARD

PRODUCT CERTIFIED FOR
LOW CHEMICAL EMISSIONS
UL.COM/GG
UL 2818

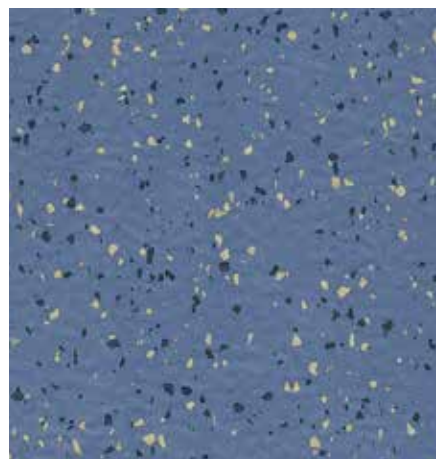
GOLD



Z 640



Z 635



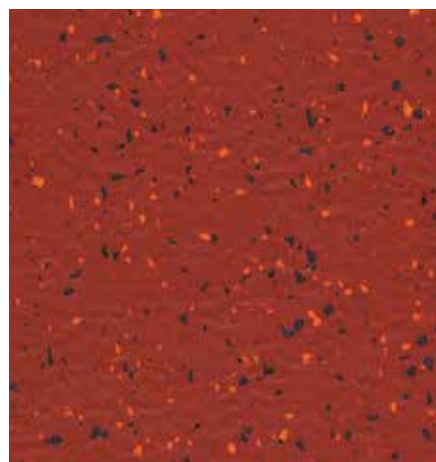
Z 632



Z 634



Z 637



Z 631



Z 633





Z 641


MASSETTO

Contemporary smooth concrete design.

 1/8 in. (3mm)

 24 in. x 24 in.
(61cm x 61cm)

 6.2 ft. x 32.9 ft.
(1.9m x 10m)

 0.98 lb./ft.²
(4.8 kg/m²)



S 01 Ivory



S 03 Greige



S 05 Cement



S 02 Antique



S 04 Haze



S 06 Charcoal

SPECS

| TEST | Description | Granito | Harmoni | Kayar | |
|-----------------------|---|-------------------------------------|-------------------------------------|-------------------------------------|--|
| ASTM D412 | Modulus at 10% Elongation | >495psi | >465psi | >400psi | |
| ASTM D2047 | Coefficient of Friction | >0.70 | >0.80 | >0.80 | |
| ASTM D2240 | Durometer Hardness (Shore A) | 95 (±5) | 95 (±5) | 95 (±5) | |
| ASTM D3389 | Taber Abrasion (H18 wheels, 1000g, 1000 cycles) | ≤0.6 | ≤0.4 | <0.3g | |
| ASTM E648 | Critical Radiant Flux | > 0.45 W/cm ² Class 1 | > 0.45 W/cm ² Class 1 | > 0.45 W/cm ² Class 1 | |
| ASTM E662 | Optical Density of Smoke | <450 | <450 | <450 | |
| ASTM F925 | Resistance to Chemicals | Compliant | Compliant | Compliant | |
| ASTM F970 | Static Load Limit (tested at 250lbs) | 0.001 in. | 0.001 in. | 0.001 in. | |
| ASTM F1514 | Heat Stability | Compliant | Compliant | Compliant | |
| ASTM F1515 | Light Stability | Compliant | Compliant | Compliant | |
| ASTM G21 | Resistance to Fungi | No Growth | No Growth | No Growth | |
| ASTM E2179 | Impact Sound Insulation | | ≥ 14 dB (ΔIIC) | | |
| Acoustics ISO 10140-3 | Impact Sound Insulation | ≥6 (ΔL _w) | | ≥11 (ΔL _w) | |

[1] bonded

[2] depending on concentration and time of contact, for specific agents please ask

| | Massetto | Natura | Terranova | Uni | Zeus |
|--|-------------------------------------|-------------------------------------|------------------------------------|-------------------------------------|-------------------------------------|
| | >405psi | >345psi | ≥300psi | >325psi | >445psi |
| | >0.80 | >0.80 | >0.80 | >0.80 | >0.80 |
| | 95 (±5) | 90 (±5) | 90 (±5) | 90 (±5) | 95 (±5) |
| | <0.15g | <0.15g | <0.5g | <0.15g | <0.6g |
| | > 0.45 W/cm ² Class 1 | > 0.45 W/cm ² Class 1 | >0.45 W/cm ² Class 1 | > 0.45 W/cm ² Class 1 | > 0.45 W/cm ² Class 1 |
| | <450 | <450 | <450 | <450 | <450 |
| | Compliant | Compliant | Compliant | Compliant | Compliant |
| | 0.001 in. | 0.001 in. | 0.004 in. | 0.001 in. | 0.001 in. |
| | Compliant | Compliant | Compliant | Compliant | Compliant |
| | Compliant | Compliant | Compliant | Compliant | Compliant |
| | No Growth | No Growth | No Growth | No Growth | No Growth |
| | | ≥ 12 dB (ΔIIC) | | | |
| | ≥10 (ΔL _w) | | | ≥10 (ΔL _w) | ≥12 (ΔL _w) |



www.mondocont





ractflooring.com



Chicago Art Institute - Modern Wing, Illinois, USA
Architect of Record / Design Architect:
Renzo Piano Building Workshop

email address: mondo@mondousa.com

Société MONDO America Inc.
2655 Francis Hughes
Laval, QC, Canada H7L 3S8
Tel.: 450 967 5800
Fax: 450 663 7927
800 663 8138

MONDO U.S.A.Inc.
1100 East Hector Street, Suite 160
Conshohocken, PA, U.S.A. 19428
Tel.: 610 834 3835
Fax: 610 834 3837
800 361 3747

